

**We know
what counts.**

**The highest
level of safety
for your craft.**



HAND GUARD

The unique optical system recognises danger even before contact.



The German Occupational Safety Award 2021





The highest level of safety:

- The hands never touch the saw blade
- Also works with suitable gloves
- The system can be switched off when cutting large sections

There are no differing opinions when it comes to the highest level of safety. But there is one system.

We know what counts.

HAND GUARD protects the most important thing in the trade - the hands. And its unique early detection system with two cameras does not just keep your employees safe, but also your orders.

With its quick lowering, and quick stop in a quarter of a second, HAND GUARD is probably the quickest guardian angel in the world.

Safety

HAND GUARD

The world's first optical system protects people, machinery, and materials.





Our task is only completed when your jobs are successful.

Success is when the numbers add up. And to keep your orders running smoothly, HAND GUARD helps you to avoid accidents and failures.

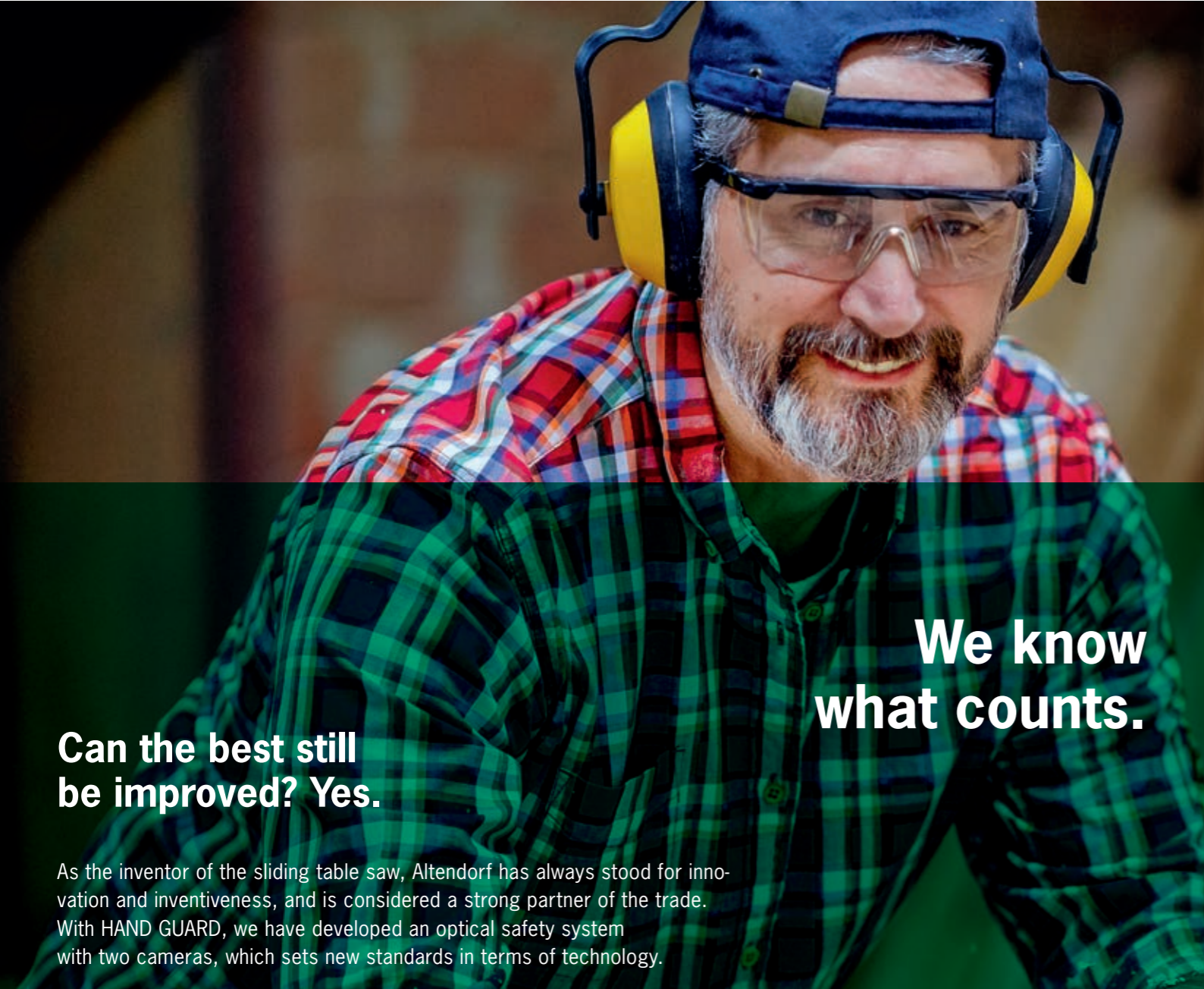
Here is what you can expect: HAND GUARD is suitable for all saw blades and materials, and can be used almost immediately again after stopping. All that without damaging materials or machinery.

We know what counts.

Productivity

HAND GUARD

No failures, no accidents: For more efficient operations and numbers that add up.



The best technology for your success:

- Preventive 2 camera system for early danger detection.
- Quick lowering and quick stop within a quarter of a second.
- Ready to use again after 10 seconds.
- Artificial intelligence (AI) recognises dangers before they occur.

We know what counts.

Can the best still be improved? Yes.

As the inventor of the sliding table saw, Altendorf has always stood for innovation and inventiveness, and is considered a strong partner of the trade. With HAND GUARD, we have developed an optical safety system with two cameras, which sets new standards in terms of technology.

Technology

The advantages of a camera-based system compared to a capacitive solution.

Optical system



- Works with all materials, e.g. aluminium, wet wood, plastics.
- The controlled downward movement protects the machine, the saw blade, and workpieces.
- Also suitable for high feed speeds and quick hand movements due to its early recognition system.
- Recovery time: 10 seconds.
- Saw blade-Ø max. 550 mm, swivelling on both sides.

Capacitive system

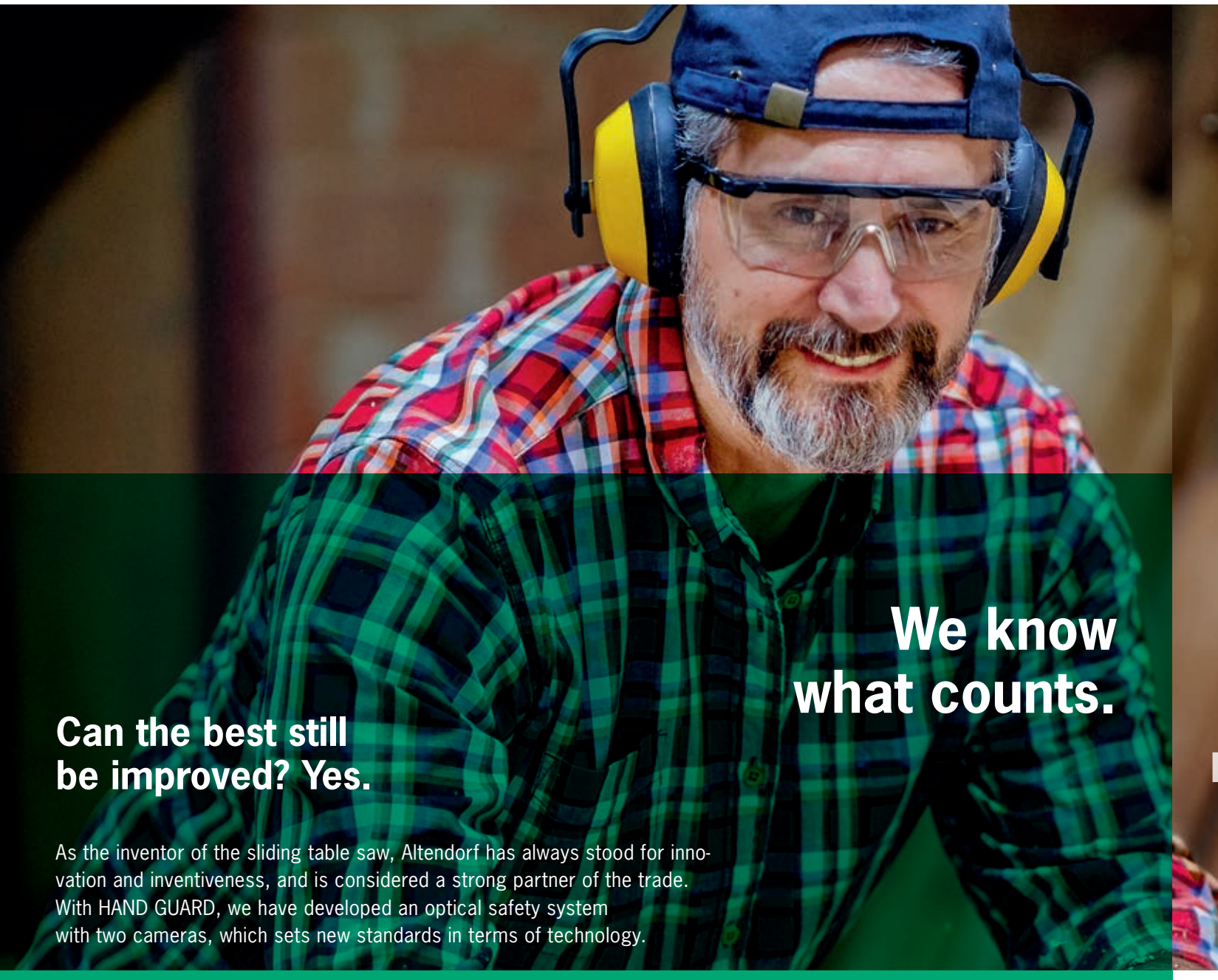


- Limited range of materials, e.g. dry wood.
- Aggregate is pushed downwards with several times the acceleration due to gravity and hits a damper.
- Low feed rate due to late detection.
- Longer time for start-up.
- Saw blade-Ø max. 400 mm, not tiltable on both sides.

HAND GUARD

Invest in the future now – we have redefined technology for you.





Can the best still be improved? Yes.

As the inventor of the sliding table saw, Altendorf has always stood for innovation and inventiveness, and is considered a strong partner of the trade. With HAND GUARD, we have developed an optical safety system with two cameras, which sets new standards in terms of technology.

We know what counts.

The advantages of a camera-based system compared to a capacitive solution.

Optical system



- Works with all materials, e.g. aluminium, wet wood, plastics.
- The controlled downward movement protects the machine, the saw blade, and workpieces.
- Also suitable for high feed speeds and quick hand movements due to its early recognition system.
- Recovery time: 10 seconds.
- Saw blade-Ø max. 550 mm, swivelling on both sides.

Capacitive system



- Limited range of materials, e.g. dry wood.
- Aggregate is pushed downwards with several times the acceleration due to gravity and hits a damper.
- Low feed rate due to late detection.
- Longer time for start-up.
- Saw blade-Ø max. 400 mm, not tiltable on both sides.

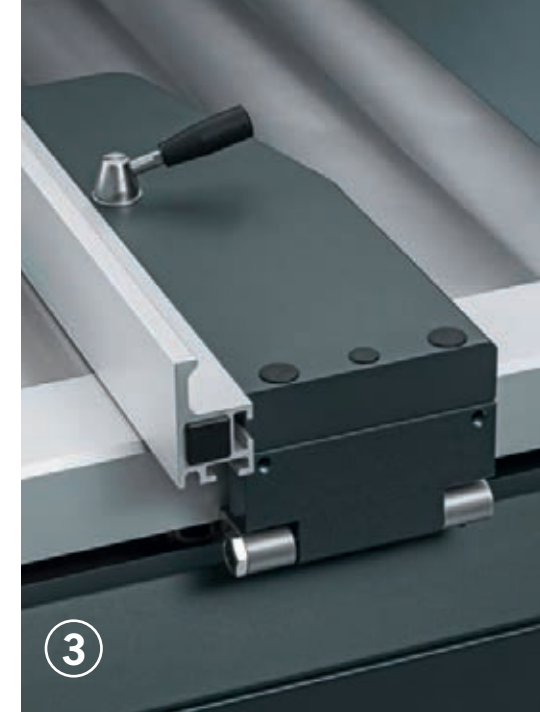
1 ElmoDrive control unit

The F 45 ElmoDrive contains the most modern and comprehensive control technology for sliding table saws. Attached at eye level, it combines the greatest ease of use and organisation with practical, ergonomic application.



2 12" Touchscreen

You can call up all functions using the screen. Functions you use regularly can be pinned in the lower section of the screen (desktop function).



3 CNC rip fence

The CNC rip fence has a traverse speed of 250 mm/s and an accuracy of $\pm 1/10$ mm. The high-precision five-point recirculating ball spindle system needs little maintenance and, along with the motor, is well protected by its integration into the aluminium profile. The fence detects its position automatically, especially in the danger area around the saw blade.

HAND GUARD

more safety, the highest productivity, and intelligent technology.

4 Sliding table, 3000 mm

It is infinitely adjustable and can be locked in whatever position required. The large dumbbell rollers guide the moving table with absolute precision between the hard-chromed guide bars. And it retains this ease of movement even after decades of hard work, dust and dirt. The hollow multi-chamber design gives great torsion resistance and rigidity.

5 Front support roller

The 300 mm-wide front support roller is particularly useful when cutting longer workpieces on the rip fence. It can be folded down through 90° in one movement to stow under the sliding table (minimum length 3,000 mm).

6 Clipboard

The clipboard mounted at eye level directly on the control unit is convenience itself. Parts lists are secured with a clamp, enabling you to keep a close eye on your jobs or other working documents as you cut. Thanks to the integrated storage ledge, you will always have your tools accessible.





HAND GUARD

More safety for your craft

PERFORMANCE FEATURES AT A GLANCE

SINGLEFLEX

TWINFLEX

Sliding table 3000 mm	●	●
Saw blade projection 150 mm	●	●
Motor rating VARIO 5.5 kW (7.5 HP)	●	○
Motor rating VARIO 5 kW (6.8 HP)	○	●
Crosscut-mitre fence DIGIT L, stops to 3200 mm	●	○
Crosscut-mitre fence DIGIT LD, stops to 3200 mm	○	●
CNC rip fence, cutting width 1000 mm	●	●
Clipboard	●	●
Front support roller	●	○
On/off switch on the sliding table	○	●

Further equipment options can be found in the pricelist.

All machinery depicted is CE design. Machinery illustrations may partly show equipment details that are not part of the basic equipment. Subject to technical changes. Last updated: 01/2022



ALTENDORF GROUP

ALTENDORF GROUP GmbH • Wettinerallee 43/45 • D-32429 Minden
 Tel. +49 571 9550-0 • handguard@altendorf.de
www.altendorf-handguard.com